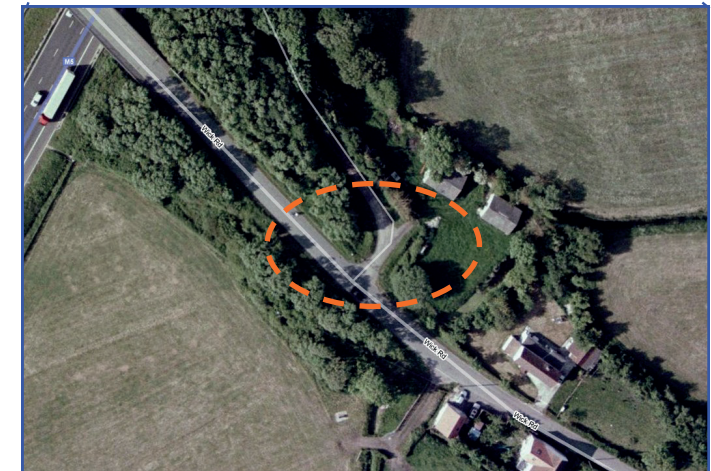
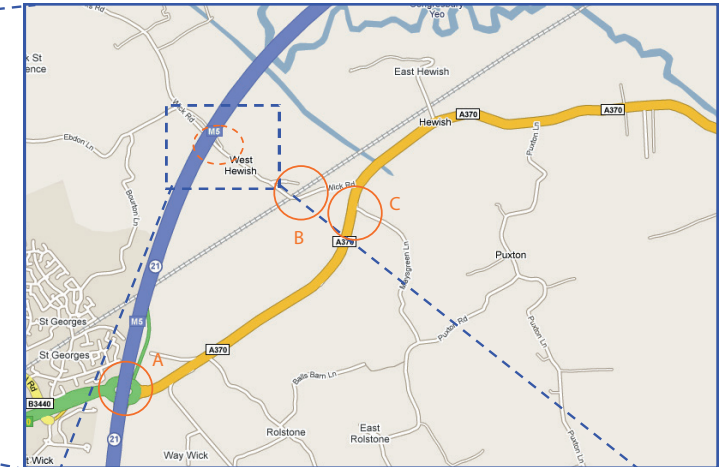


The nearest postcode for GPS is **BS24 6RR**



Directions to Hewish from M5 J21 (A)

- Head towards Bristol along A370
- Look out for Flavours (C) restaurant on right
- Take next left signposted to Wick St Laurence
- Cross over rail bridge (B) and past farm buildings (right)
- Look out for Micro Brewery RCH Brewers (Pitchfork) on left
- Turn right at a double, six bar gate
- Drive down the track and bear right, continue driving parallel to the M5 motorway along the single lane track until you reach a container after at the next gate. Park up here and your instructor will meet you

Directions to Hewish from Bristol

- Leave Bristol along A370 following signs for Weston-S-Mare
- At Congresbury you are a couple of miles from your turning
- Drive past plant nursery on left
- Looking out for the Flavours restaurant on left (C)
- Before the restaurant take right turn to Wick St Laurence
- Follow directions above from fourth line of M5 J21 (A)